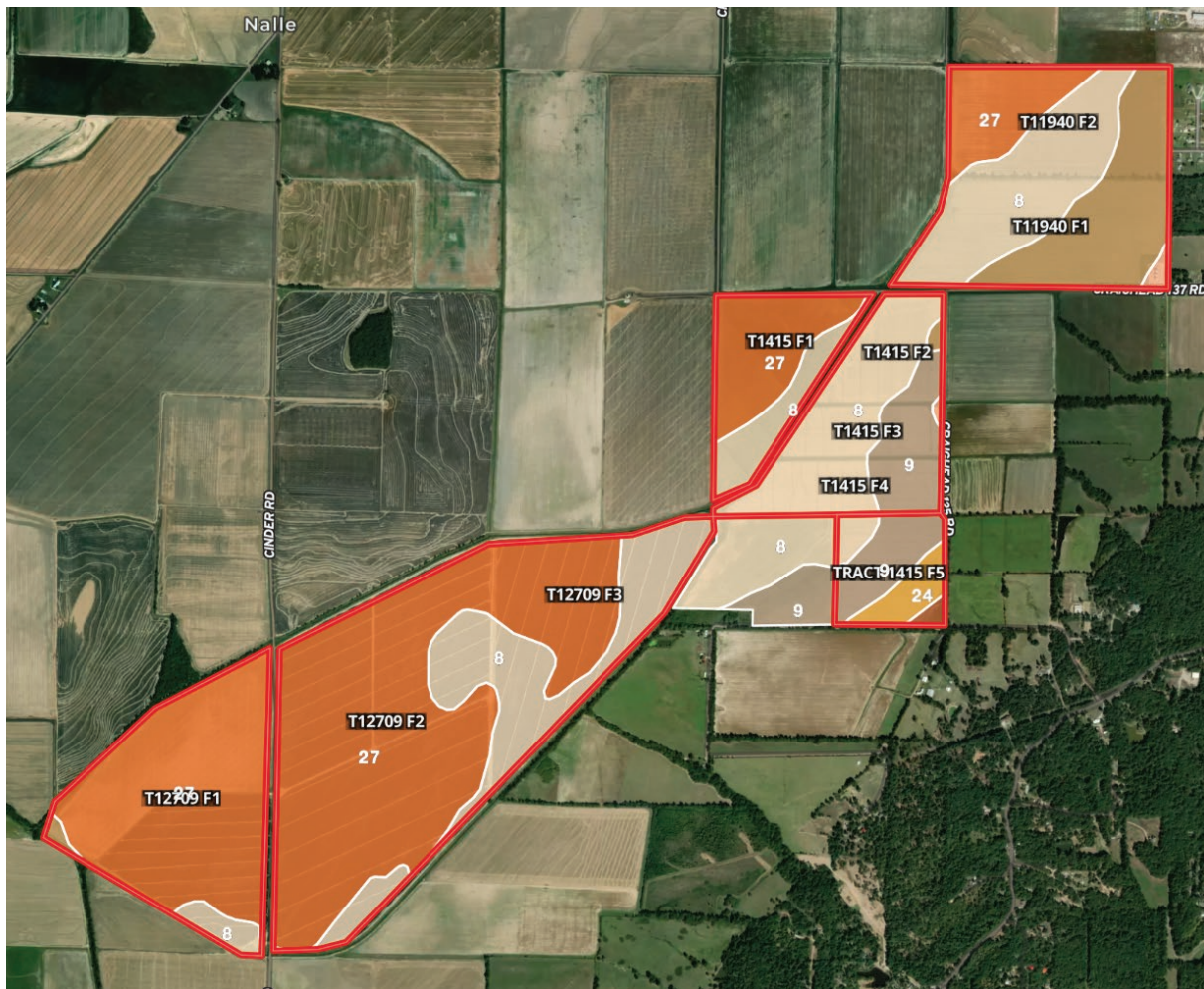




# THE BONO FARM

Craighead County Arkansas

## SOIL MAP



### Soil Code Key

<b>27</b>	Jackport silty clay loam, 0 to 1 percent slopes (428.54 Acres/49.8%)	<b>24</b>	Grenada silt loam, 1 to 3 percent slopes (11.7 Acres/1.36%)
<b>8</b>	Calhoun silt loam (282.31 Acres/32.81%)	<b>10</b>	Calloway silt loam, 1 to 3 percent slopes (3.1 Acres/0.36%)
<b>21</b>	Falaya silt loam, 0 to 1 percent slopes, occasionally flooded, brief duration (67.79 Acres/7.88%)	<b>30</b>	Loring silt loam, 3 to 8 percent slopes, west, upland phase (2.18 Acres/0.25%)
<b>9</b>	Calloway silt loam, 0 to 1 percent slopes (64.97 Acres/7.55%)		